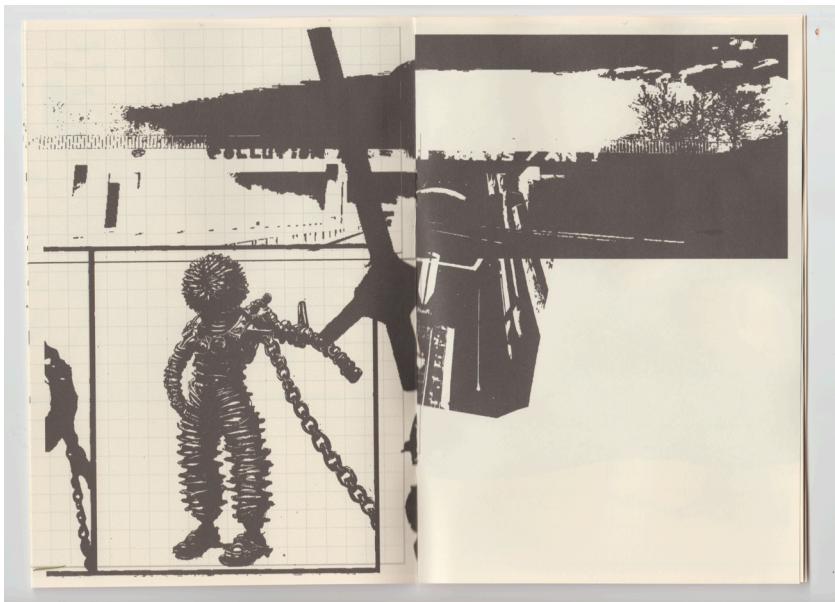
The page features several faint pencil sketches. At the top, there are sketches of mountain ranges. On the right side, there are sketches of a landscape with a body of water and a small structure. At the bottom, there is a large, detailed sketch of a mountain range with a winding path or road. The text is positioned on the left side of the page.

Alice Olausson
Matière affective
2026

My work deals with the emotional condition of perceived space.

This is a simplified and shortened version of my portfolio.



Sans titre

Edition, format A5, 2025



é+toile

Installation, dimensions variées, 2024



Ida

Technique mixte sur toile, 120 × 200 cm, 2026



Tick

Technique mixte sur toile, 60 × 120 cm, 2026



casualties

Technique mixte sur toile, 30 x 30 cm, 2024



Entropy is unavoidable (en collaboration avec Igor Dubreucq)

Edition, format A5, 2025



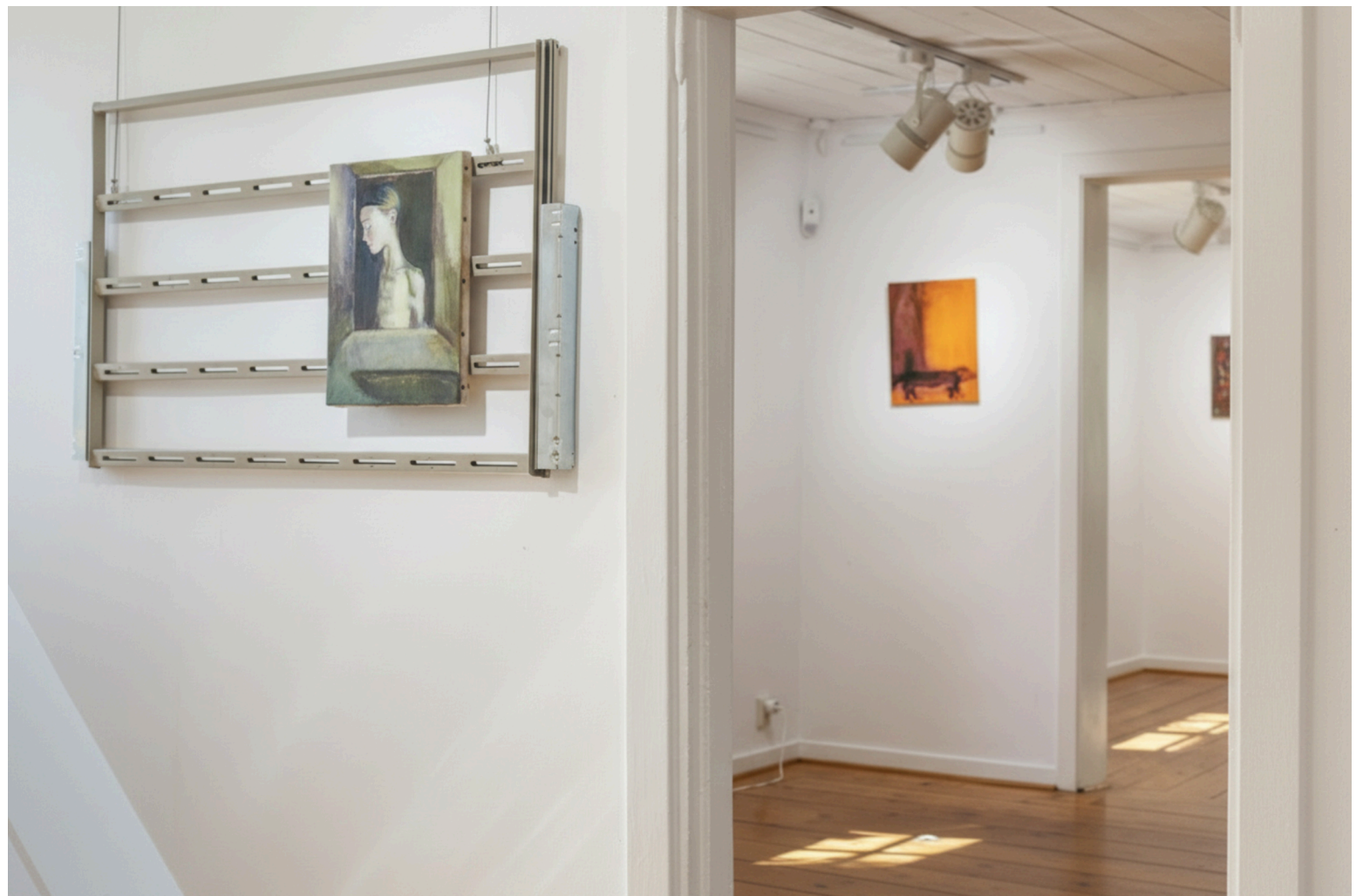
blue folia

Technique mixte sur toile,
80 x 60 cm, 2025



Dinosaure

Technique mixte sur papier, 30 x 40 cm, 2026



gossamer

Installation, 150 x 90 cm, 2025



gossamer

Installation ; cadre métallique, peinture à l'huile sur toile, 150 x 90 cm, 2025



tassel

Technique mixte sur toile, 80 x 100 cm, 2026